

# About the Social Planning and Research Council of BC (SPARC BC)

SPARC BC knows that communities benefit when people have equitable access to places, knowledge, and services. We also know that communities are about people and that is why we are passionate about working with communities on issues of accessibility, income security and community development.

TO CONTACT SPARC BC:  
www.sparc.bc.ca  
info@sparc.bc.ca  
604.718.7733  
4445 Norfolk Street,  
Burnaby, B.C. V5G 0A7

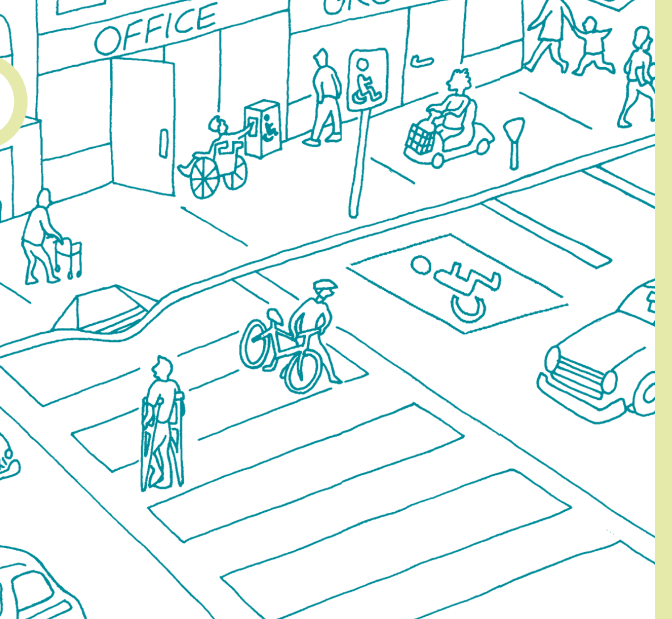


people. planning. positive change.

WWW.WORKINGDESIGN.NET

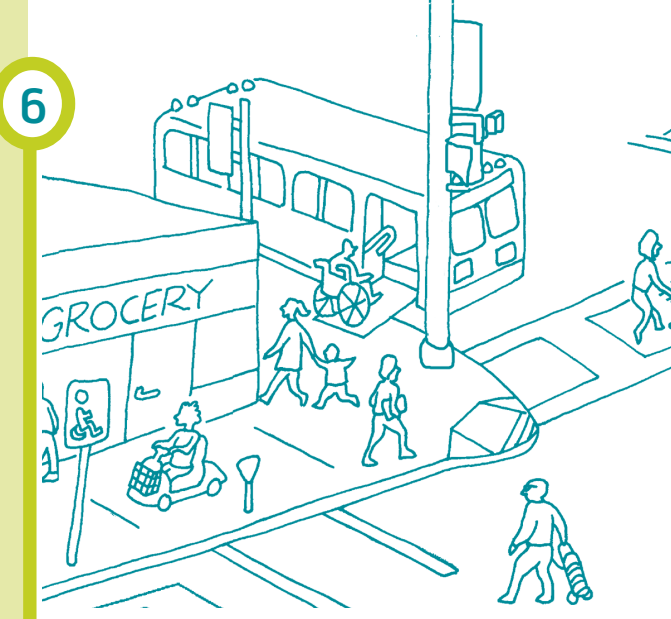
## Accessible streets

include consistent curb cuts, clear signage and clear sidewalks. Tree roots, cracked pavement and steep slopes or grades can make it difficult for people using mobility aids to get around.



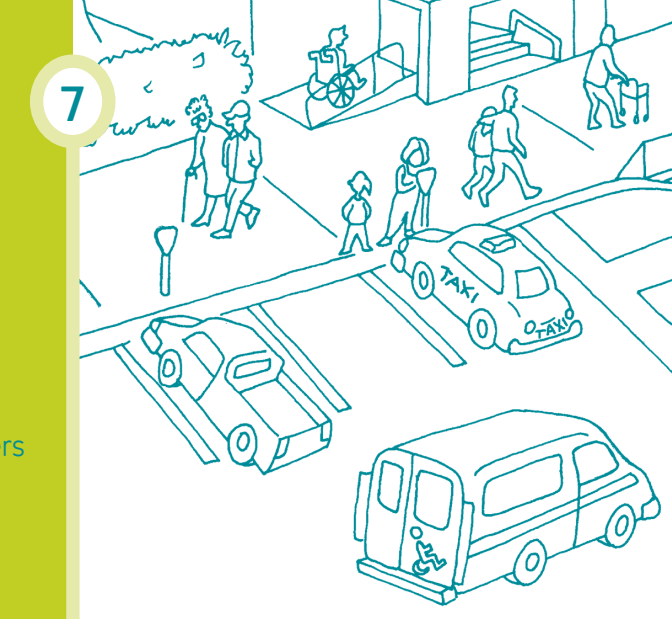
## Accessible public transit

includes both buses and bus shelters. Having a range of different types of options available is also important.



## Accessible taxi services

help to provide people with disabilities with more choices. Taxi companies should work to make sure that a certain percentage of their fleet is accessible and that their drivers have appropriate training.



+ accessible

housing design  
parks  
parking  
gas stations  
streets  
public transit  
taxi service

=

accessible community!

# Celebrate accessibility in our communities



# An Accessible Community...

- ...supports the independence, comfort, self-esteem and security of everyone
- ...recognizes the importance of access to services and promotes equality, respect and inclusion
- ...recognizes that people make a community
- ...is a sustainable community

Accessible communities ensure that people with disabilities have the resources, tools and choice to access services that are important to them.

This brochure measures **36"** or **91cm**

Use it to measure for accessible spaces.

## Adaptable housing

includes design features that can be **modified to meet the changing needs** of the people who live there.

## Accessible parks

include trail surfaces that are **hard, slip resistant and free of obstacles**. Accessible pathways should also be **clearly marked**.

## Accessible parking

include parking spaces designated in the community that are **3.7 metres wide** to allow people who require a wheelchair to get in and out of their vehicle. Clear signage and enforcement are also important features.

## Accessible gas stations

represent an important part of a complete community. Accessible gas stations offer **full service options** for people who are limited in their ability to use self service.